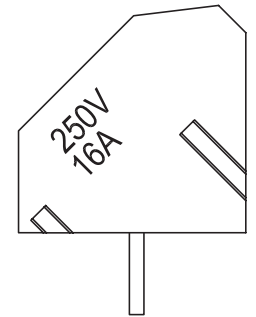
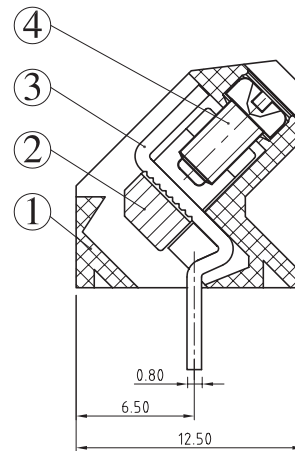
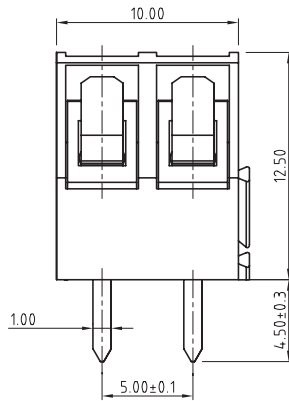
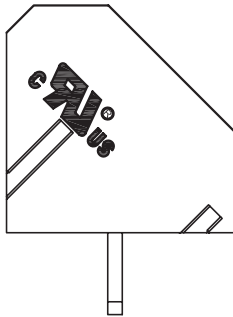
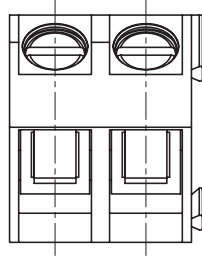
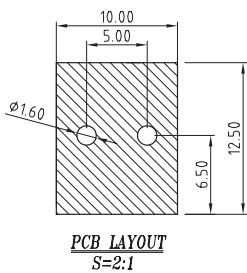


5.00mm Pitch



Rated Voltage	250V	130V
Rated Current	16A	
Insulation Withstand Voltage	AC 2000V / Min	
Insulation Resistance	500MΩ or More at DC500V	
Temperature Range	-40°C to +105°C	
Wire Range	12-26 AWG	2.5mm <sup>2</sup>
Screw Torque	0.4Nm	

Units: mm



- ① Housing: PA66(V0)
- ② Block: Brass, Nickel Plated
- ③ Solder Pin: Brass, Tin Plated
- ④ Screw: Steel, Zinc Plated

### Part Numbering System:

104-500 - XPP - XXX - X

①      ②      ③      ④

- ① Series
- ② Number of Poles: 02, 03, 04, ..., 24
- ③ Insulator Color: GRN = Green, BLK = Black, BLU = Blue
- ④ Screw: S = Slot, C = Cross

# Pin	2	3	4	5	6	7	8	9	10	11	12	13
Dim L	10	15	20	25	30	35	40	45	50	55	60	65
Dim A	5	10	15	20	25	30	35	40	45	50	55	60
# Pin	14	15	16	17	18	19	20	21	22	23	24	
Dim L	70	75	80	85	90	95	100	105	110	115	120	
Dim A	65	70	75	80	85	90	95	100	105	110	115	